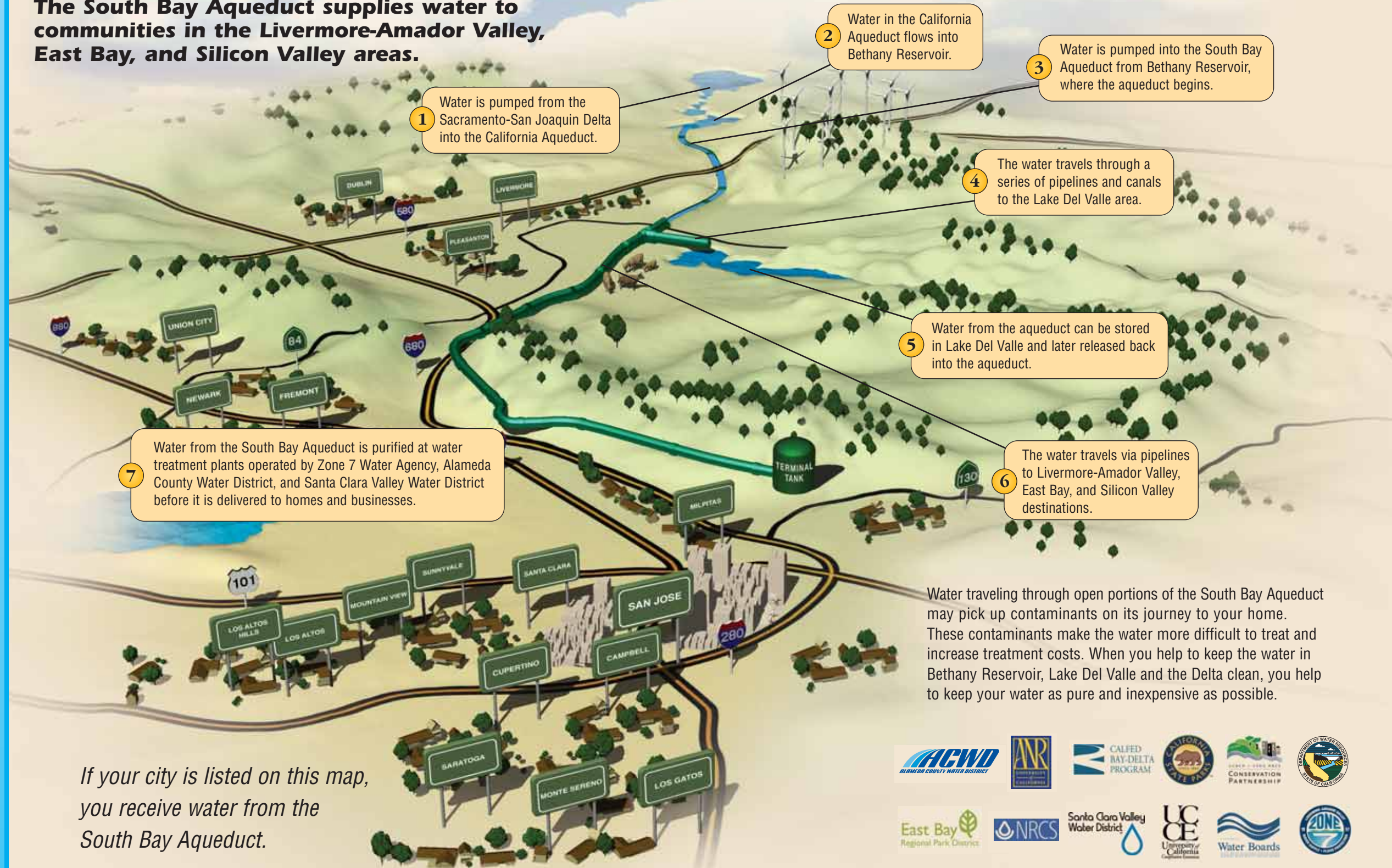


Less than one-half of the water used in the Livermore-Amador Valley, southern Alameda County, and Silicon Valley communities is produced locally; much of it is imported from the Sacramento-San Joaquin Delta. The South Bay Aqueduct moves water from the Delta to nearly 2.3 million people in the greater Bay Area. In a very real way, the South Bay Aqueduct acts as a lifeline to the Bay Area, for without it there would not be enough water for us to maintain the lifestyle we now live.

The South Bay Aqueduct... A Lifeline to the Bay Area.

The South Bay Aqueduct supplies water to communities in the Livermore-Amador Valley, East Bay, and Silicon Valley areas.



If your city is listed on this map, you receive water from the South Bay Aqueduct.

